



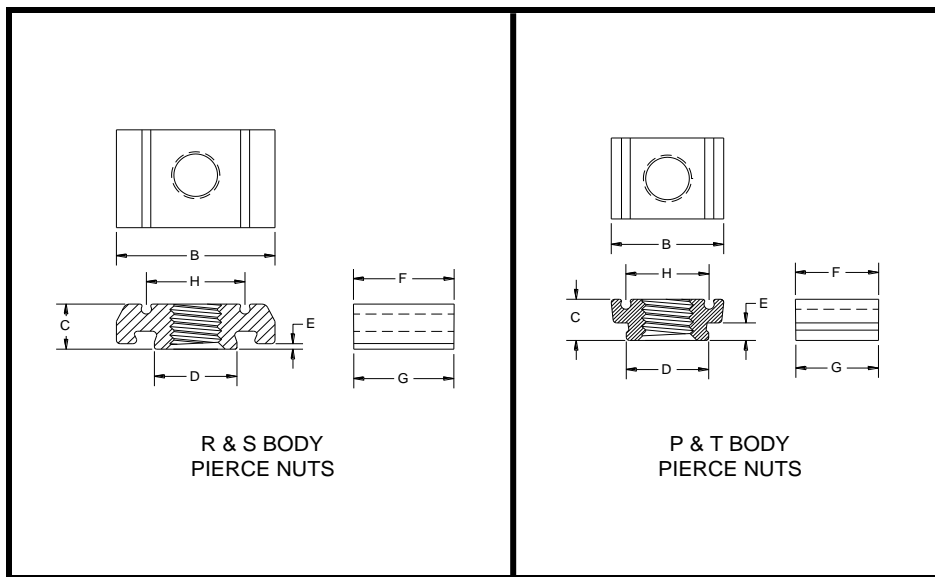
Fastener Advance Products

Pierce Nut Specifications

FAP has advanced High-speed equipment which has been specifically built for the manufacturing of pierce nuts. All of our products are 100% inspected by our optical vision equipment to ensure the highest quality and on time deliveries and can be installed on a variety of materials and thickness. Utilizing FAP pierce nuts saves you time and money. In addition you avoid a variety of issues associated with in-house welding. Including:

- Perpendicular problems
- Noxious fumes
- Cold welds
- Degeneration of product material or ruining finished process
- Weld spatter

METRIC PIERCE NUT INSTALLATION INFORMATION



Metric Dimensions							
Body Style	R-205	R-235	S-281	S-311	T-213	T-252	P-187
Range of Thread	M5 - M6	M5 - M6	M6 - M8	M8	M6 - M8	M6 - M8	M4 - M6
Panel Thickness	0.64-2.03	1.40-2.79	0.64-2.03	1.40-2.79	0.66-1.96	1.30-2.69	0.64-1.68
Dim B ♦♦	18.16-18.03	18.16-18.03	20.49-20.75	20.52-20.75	17.30-17.70	17.30-17.70	12.57-12.83
Dim C	5.21-5.29	5.90-6.10	7.08-7.22	7.83-7.97	5.20-5.60	6.20-6.60	4.67-4.83
Dim D ♦♦	9.35-9.48	9.35-9.48	10.84-11.10	10.84-11.10	12.10-12.50	12.10-12.50	9.14-9.40
Dim E	0.54-0.64	1.32-1.42	0.54-0.64	1.30-1.40	2.00-2.40	3.00-3.40	1.90-2.06
Dim F ♦♦	11.36-11.61	11.36-11.61	13.89-14.22	13.92-14.22	12.20-12.60	12.20-12.60	9.28-9.50
Dim G	11.35-11.48	11.35-11.48	13.78-14.02	13.78-14.02	12.10-12.50	12.10-12.50	9.14-9.40
Dim H	11.20-11.30	11.20-11.30	12.95-13.06	12.95-13.06	12.95-13.06	12.95-13.06	9.45-9.55

♦♦ - ADDITIONAL LOCAL DISTORTION OF 0.15mm PER SIDE
MAY BE EXPERIENCED

CONSULT MANUFACTURER FOR INSTALLATION
RECOMMENDATIONS THAT ARE NOT STANDARD

For More Information contact:
U.S. offices and Manufacturing
750 Hogan Road Manchester, MI 48158
(734) 428-8070 Fax: (734) 428-7369
www.fasteneradvance.com



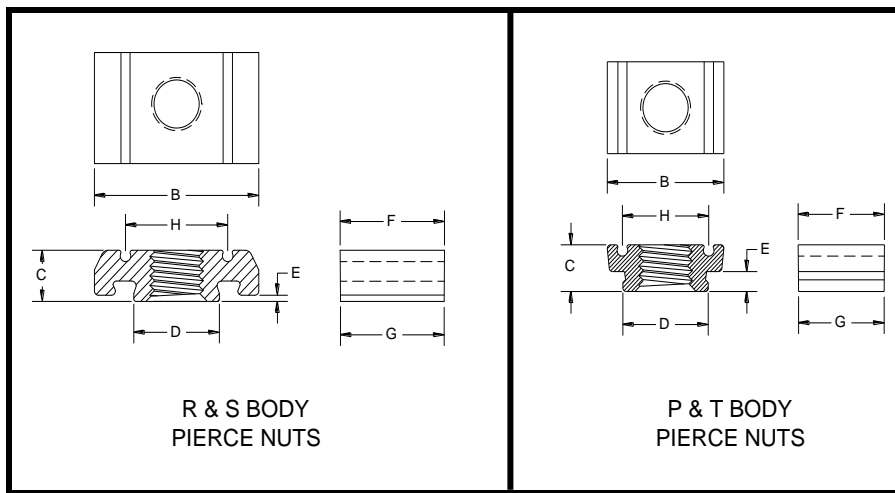
Fastener Advance Products

Pierce Nut Specifications

FAP has advanced High-speed equipment which has been specifically built for the manufacturing of pierce nuts. All of our products are 100% inspected by our optical vision equipment to ensure the highest quality and on time deliveries and can be installed on a variety of materials and thickness. Utilizing FAP pierce nuts saves you time and money. In addition you avoid a variety of issues associated with in-house welding. Including:

- Perpendicular problems
- Noxious fumes
- Cold welds
- Degeneration of product material or ruining finished process
- Weld spatter

STANDARD PIERCE NUT INSTALLATION INFORMATION



Standard Dimensions							
Body Style	R-205	R-235	S-281	S-311	T-213	T-252	P-187
Range of Thread	#10 - 1/4	#10 - 1/4	1/4 - 5/16	5/16	1/4 - 5/16	1/4 - 5/16	#8 - 1/4
Panel Thickness	0.025-0.080	0.055-0.110	0.025-0.080	0.055-0.110	0.026-0.077	0.051-0.106	0.025-0.066
Dim B ♦♦	0.710-0.715	0.710-0.715	0.807-0.817	0.808-0.816	0.681-0.697	0.681-0.697	0.495-0.505
Dim C	0.205-0.208	0.232-0.240	0.279-0.284	0.308-0.314	0.205-0.220	0.244-0.260	0.184-0.190
Dim D ♦♦	0.368-0.373	0.368-0.372	0.427-0.437	0.427-0.437	0.476-0.492	0.476-0.492	0.360-0.370
Dim E	0.022-0.025	0.052-0.056	0.022-0.025	0.052-0.055	0.079-0.094	0.118-0.134	0.075-0.081
Dim F ♦♦	0.447-0.457	0.447-0.457	0.547-0.560	0.548-0.560	0.480-0.496	0.480-0.496	0.365-0.374
Dim G	0.447-0.452	0.447-0.452	0.543-0.552	0.543-0.552	0.476-0.492	0.476-0.492	0.360-0.370
Dim H	0.441-0.445	0.441-0.445	0.510-0.514	0.510-0.514	0.510-.0514	0.510-.0514	0.372-0.376

♦♦ - ADDITIONAL LOCAL DISTORTION OF .006" PER SIDE
MAY BE EXPERIENCED

CONSULT MANUFACTURER FOR INSTALLATION
RECOMMENDATIONS THAT ARE NOT STANDARD

For More Information contact:
U.S. offices and Manufacturing
750 Hogan Road Manchester, MI 48158
(734) 428-8070 Fax: (734) 428-7369

www.fasteneradvance.com